

Crested Butte Fire District Protection District Service Plan



Updated: July 13, 2021

Table of Contents

Table of Contents.....	2
Executive Summary.....	2
Recitals.....	2
Community Summary	3
Organizational History	4
General Statement of Purpose	4
Services	4
Facilities	5
Area Served.....	6
Agreements.....	6
Financing	6
Exhibit A – District Boundaries.....	7

Executive Summary

The Crested Butte Fire Protection District serves the municipalities of Crested Butte, Mt. Crested Butte and portions of unincorporated Gunnison County in the Upper Gunnison Valley through the provision of comprehensive emergency response and community risk reduction services in order to protect the safety and enhance the lives of citizens, property owners and visitors.

Primary services provided by the district include emergency medical services (EMS), ambulance transportation, structural and wildland fire suppression, rescue services, hazardous materials response, fire and life safety code adoption, fire prevention, code enforcement, member housing and related services.

The District provides services through paid and volunteer staff utilizing vehicles and equipment operating out our four stations located throughout the District.

Funding for District operations comes primarily from an ad valorem tax levied on properties located within the District. Additional revenue is derived from specific ownership taxes, ambulance user fees, plan review fees, impact fees, investment income, grants, intergovernmental payments and other incidental revenue.

The District is one of many local governments within Gunnison County and works cooperatively with other local governments, health care, and public safety providers to ensure services are provided in an effective, efficient and integrated manner.

Recitals

The Crested Butte Fire Protection was organized by court decree on September 10, 1973 in accordance with Chapter 89, Article 6 of the Colorado Revised Statutes. The organization of the District was

preceded by the preparation and submission of a service plan that was reviewed and accepted by the Gunnison County Board of County Commissioners on May 21st, 1973. Following the reorganization, reenactment and amendments to Colorado Special District Act, the District filed a revised Statement of Purposes with the Gunnison County Board of County Commissioners and the Colorado Division of Local Government in September of 1986 in accordance with §32-1-208 C.R.S. Following a multi-year effort in conjunction with the Gunnison County Fire Protection District the current District boundaries were established following an election and an inclusion order on November 15, 1994. A Material modification to add affordable member housing to the services provided by the District was enacted by the Board of Directors in accordance with § 32-1-207 (3)(b) C.R.S. on October 13, 2015. This document serves as a consolidation of those previous activities as well as a review and update to the service plan by the Board of Directors and management of the District in late 2020 and early 2021.

Community Summary

The Upper East River Valley around Crested Butte is believed to have been a regular summer residence of the Ute people native to the Western Slope of Colorado. White migrants first entered the Crested Butte area in the 1860s and established silver and coal mines throughout the valley with Crested Butte becoming the supply center and eventual rail terminus of the upper valley. Silver mining was short-lived ending with the decline of silver prices in 1893. Coal mining, however continued along with ranching as the major economic activities of the area throughout the first half of the 20th Century. Population of the area declined with the closing of most mines in the 1950s.

The Crested Butte Ski Area opened in 1963 and began a new economic era focused mostly on tourism. Tourism, including the associated construction and service sectors continue to be the main drivers along with ongoing ranching activity. Crested Butte and the Gunnison Valley continue to be growing in popularity as a tourist and second home destination with abundant camping, hiking, mountain biking, skiing and motorized recreational opportunities. While difficult to quantify, it is reasonable to believe Crested Butte may be following a similar path to more developed mountain resort communities in the state such as Aspen, Breckenridge, Steamboat Springs, Telluride, Vail, and Winter Park. For a Town of its size, Crested Butte has a vibrant commercial district with shops and restaurants and boasts a number of summer and winter festivals. It has adopted a variety of themes in recent years including: “Colorado’s last great ski town,” and “the wildflower capital of Colorado.”

The boundaries of the Fire District are mostly contiguous with Colorado Census Tract 9638 which as of 2020 reported a permanent population of 4,845 in 1,933 Households with 4,447 Housing units of which 1,822 were categorized as seasonal. While the exact number of lodging, short-term rental and seasonal residences is difficult to quantify exactly, it is believed that visitor populations in peak seasonal periods can increase the overall population 2 – 4 times the base population.

The population is mostly white (93%), however, it encompasses all age ranges with a significant number of residents both under 18 and over 65/ As of the 2020-2021 school year the Crested Butte Community School, the only K-12 school in the district had close to 800 enrolled students. While skier visitation numbers are not publicly available it is estimated that the Crested Butte Mountain Resorts sees approximately 400,000 – 600,000 skier days per season. Total visitation to the County as estimated by Tourism and Prosperity Partnership (TAPP) was 417,000 in calendar year 2019.

Organizational History

The Crested Butte Fire Protection was established on September 10, 1973 by decree of the District Court in the Seventh Judicial District and the County of Gunnison in accordance with Colorado Revised Statutes § 89-17-2. The Colorado Division of Local Government certified the organization of the District on September 12, 1973. The original boundaries of the District included the Town of Crested Butte incorporated in 1880, the Crested Butte Ski area as determined by the boundaries of the Mt. Crested Butte Water and Sanitation District established in 1963 that later became the municipality of Mt. Crested Butte, and a tract of ranch land connecting the two jurisdictions along the Gothic Road Corridor. The formation of the fire protection district replaced volunteer fire protection provided on an intermittent basis by Town of Crested Butte with non-motorized equipment beginning in the 1880s. The initial work to form the District was largely due to the efforts of John Liebson who served as organizer, founding board member and the first Fire Chief.

The District constructed its first fire station in 1974 at 306 Maroon Ave on land leased from the Town of Crested Butte. The provision of ambulance service by the District began in 1975, however, it is unclear if the service plan was successfully modified to reflect that activity at the time. The District filed a Statement of Purposes with the Board of County Commissioners and the Colorado Division of Local Government that was approved on September 23, 1986 clearly reflecting the emergency medical and fire suppression services provided by the CBFPD and bringing the District into compliance with Colorado Revised Statutes § 32-1-208(1).

After a multi-year process undertaken with rural subdivisions and the Gunnison County Fire Protection District, the boundaries of the CBFPD were expanded in 1995 to encompass 220 square miles of the Upper Gunnison Valley as described in Appendix A. Throughout 1990s and early 2000s additional District stations were constructed in Mt. Crested Butte, Crested Butte South and Buckhorn Ranch. A material modification of the statement of purposes was adopted on October 13, 2015 authorizing the District to provide affordable housing to its personnel.

General Statement of Purpose

The District is organized pursuant to the Colorado Special District Act § 32-1-101, C.R.S *et seq.* (the “Act”) for the purpose of providing protection to the community from a variety of hazards and emergencies. The primary services provided by the District include Emergency Medical Services (EMS), fire protection, and related services. The District will utilize all statutory authority afforded to a governmental subdivision of the State of Colorado and a body corporate with all the powers of a public or quasi-municipal corporation.

Services

The District currently provides, or reserves the right to provide in the future all services permitted by the Act, as it may be amended from time to time including but not limited to the following named services either directly, by contract, or in collaboration with others.

Emergency Medical services to Include:

1. Emergency medical response
2. Ambulance service

3. Inter-facility and critical care transport
4. Non-emergency medical transportation
5. Medical standby service
6. Community health services
7. Emergency mental or behavioral health services
8. Medical support of tactical and wilderness operations
9. Injury and illness prevention

Fire protection services to include:

1. Structural firefighting
2. Wildland firefighting
3. Aircraft rescue and firefighting
4. Hazardous materials response
5. Fire code Enforcement
6. Life safety Inspections
7. Fire mitigation and fuels treatment
8. Water supply for firefighting
9. Fire prevention and life safety education

Rescue Services to include:

1. General rescue and extrication
2. Water rescue
3. Mountain rescue
4. Diving and grappling

Support Services to include:

1. Affordable housing
2. Maintenance and repair
3. Training and education
4. Administration

These services may be provided within District boundaries or outside of the District by request or through agreement. In some cases, the District may provide services in a cooperative manner as determined by the incumbent provider or the authority having jurisdiction.

Facilities

1. Station 1 – 306 Maroon Ave, Crested Butte, CO 81224
2. Station 2 – 751 Gothic Road, Mt. Crested Butte, CO 81225
3. Station 3 – 349 Teocalli Road, Crested Butte, CO 81224
4. Station 4 – 104 S. Avion, Crested Butte, CO 81224
5. Administration – 308 Third Street, Crested Butte, CO 81224
6. Member Housing:

- a. 819, 821, and 823 Teocalli Ave, Crested Butte, CO 81224
- b. 10 Ninth Street, Crested Butte, CO 81224

Future stations, substations, training facilities and member housing may be located, rented, financed and/or constructed to meet the needs of the District at the discretion of the District's Board of Directors.

Staffing

The delivery of emergency services requires a well-trained cadre of emergency services personnel available around the clock to respond to emergencies. District utilizes a combination staffing model that consists of volunteer, part-time and full-time personnel to meet these needs. The combination model is an effective mechanism to ensure reliable response with paid crew members while also leveraging community volunteers and part-time staff as force multiplier. Operational staff are supported by fire prevention, administrative and management team members.

Area Served

The District serves approximately 220 square miles of the Upper Gunnison Valley including the municipalities of Crested Butte and Mt. Crested Butte as well as portions of unincorporated Gunnison County to including but not limited to Crested Butte South, Gothic, Irwin, Riverland and Skyland. A legal description of the District and map is contained in Exhibit A.

Agreements

The district maintains a number of agreements with public and private organizations to facilitate and advance its mission including but not limited to: land use agreements, service agreements, mutual aid agreements and others. The District reserves the right to enter into, modify or terminate agreements as needed.

Financing

The District is primarily funded by an ad valorem tax on property within the Fire District. Other major revenue sources include specific ownership tax, ambulance fees, plan review and permit fees, special event charges, grants and intergovernmental transfers. The District also charges impact fees that are reserved for capital improvements as required by law. The District may participate in investing or financing activities as allowed by law and approved by the Board of Directors and/or the voters.

Exhibit A – District Boundaries

All of Township 14 South, Range 85 West

All of Township 13 South, Range 86 West

All of Township 13 South, Range 85 West

Township 14 South, Range 86 West

Sections 1, 2, 3, 4, 5, 6, 7, 8, 9, 10, 11, 12, 13, 14, 15, 16, 17, 18, 23, 24, 25, 26, 35 and 36

Township 13 South, Range 84 West

Sections 5, 6, 7, 8, 17, 18, 19, 20, 29, 30, 31 and 32

Township 14 South, Range 84 West

Sections 5, 6, 7, 8, 18, 19, 30 and 31

Township 14 South, Range 87 West

Sections 1, 2, 3, 11, 12, 13, and the east 1/2 of 10

That part of the following property located within the Upper Gunnison River Water Conservancy District:

Township 13 South, Range 87 West

Township 12 South, Range 87 West

Township 12 South, Range 86 West

Township 12 South, Range 85 West

County of Gunnison,

State of Colorado.

EXCEPTING THEREFROM:

The following six tracts located in the County of Gunnison, State of Colorado:

TRACT I.

The Town of Crested Butte, Colorado, as set forth on the official plat of said Town filed June 6, 1881, and bearing Reception No. 14191 of the records of Gunnison County Colorado, excepting therefrom that portion of the Town of Crested Butte lying and situate East of a line described as follows:

Commencing at the intersection of the North boundary line of said Town and the East boundary line of 8th Street; thence Southerly along the East boundary line of said 8th Street to the northwest corner of Block 66; thence Easterly along the Southerly line of White Rock Avenue to the Northwest corner of Block 79; thence Southerly along the Easterly boundary line of 9th Street to the Southerly boundary line of said Town of Crested Butte.

TRACT II.

In Township 13 South, Range 86 West of the 6th P.M.:

Section 13: SW1/4 SW 1/4

Section 14: SE1/4 NE1/4, E1/2 SW1/4 NE1/4, E1/2 SE1/4, and E1/2 NW1/4 SE1/4

Section 23: E1/2 NE1/4, SE1/4

Section 24: W1/2 NW1/4, NW1/4 SW1/4

Section 26: NE1/4, N/2 SE1/4, SE1/4 SE1/4

Section 35: NE1/4 NE1/4

Including those portions thereof duly platted as:

LODGE SITES AREA

- Chalet Village Addition
- Chalet Village Addition No. 2
- Chalet Village Addition No. 3
- Chalet Village Addition No. 6
- Chalet Village Addition No. 7
- Chalet Village Addition No. 8
- Chalet Village Addition No. 9
- Chalet Village Addition No. 10

County of Gunnison, State of Colorado.

TRACT III.

In Township 13 South, Range 86 West of the 6th P.M.:

Section 26: SW1/4 SE1/4, S1/2 SW1/4

Section 35: N1/2 NW1/4, NW1/4 NE1/4 and S1/2 NE1/4.

TRACT IV.

In Township 13 South, Range 86 West of the 6th P.M.:

Section 35: A tract of land 150 feet in width adjacent to the westerly boundary line of the Crested Butte-Gothic County-Public road and extending from the northerly boundary line of the Town of Crested Butte on the south to the southerly boundary line of Tract III on the north.

TRACT V.

A tract of land within the SW1/4 SW1/4 of Section 35 and the SE1/4 SE1/4 of Section 34, Township 13 South, Range 86 West, Sixth Principal Meridian, Gunnison County, Colorado said tract being more particularly described as follows:

Commencing at the Southeast quarter corner of said Section 34 (as marked by a USGLO brass can monument); said corner being the POINT OF BEGINNING for the herein described tract; thence the following courses around said tract;

1. North 89° 42' 45" West 200.00 feet along the north boundary of the Town of Crested Butte;
2. North 0° 35' 00" West 425.00 feet;
3. South 89° 42' 45" East 200.00 feet to a point on the east boundary of said Section 34;
4. South 0° 35' 00" East 368.96 feet to the northwest corner of the Kapushion property as described in Book 516 at Page 494 in the Gunnison County Records;
5. South 89° 39' 00" East 48.14 feet to the northeast corner of said Kapushion and Company property;
6. South 56.00 feet along the eastern border of said Kapushion and Co. property to the north boundary of the Town of Crested Butte; and
7. North 89° 41' 18" West 47.57 feet along said north boundary to the POINT OF BEGINNING of the herein described tract.

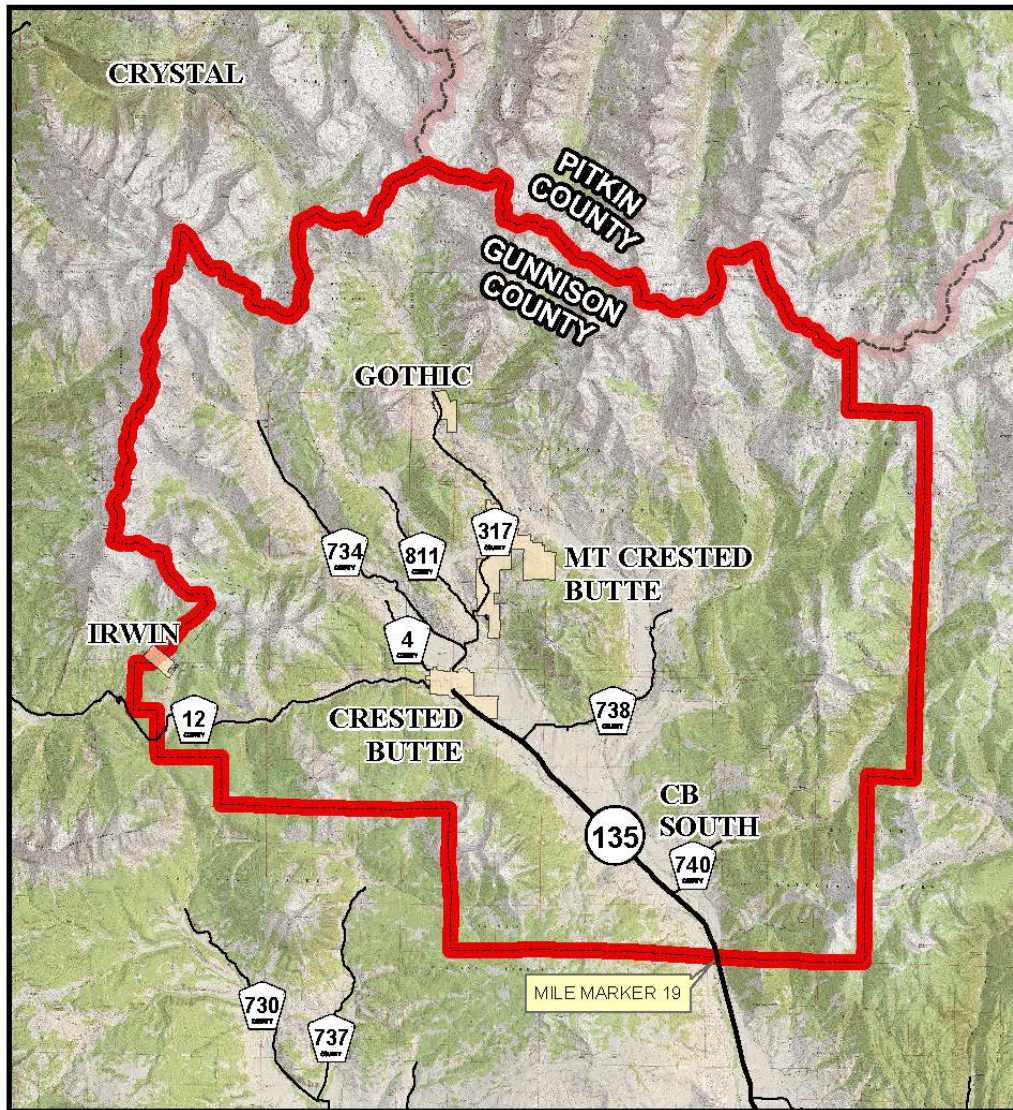
Excluding therefrom a parcel of .825 acres, more or less, located within TRACT IV of the boundaries of the Crested Butte Fire Protection District.

TRACT VI.

Township 14 South, Range 86 West, 6th P.M.

Section 3: The SURFACE RIGHTS ONLY of a tract of land in the NE14/ NW1/4 of said section, more particularly described as follows:

Beginning at a point on the West line of the Town of Crested Butte 468 feet South of the Northwest corner, of said Town, thence running 466 1/2 feet West to a point; thence South 585 1/2 feet to a point; thence East 466 1/2 feet to a point on the West boundary line of the Town of Crested Butte; thence North 585 1/2 feet along the said line to the point of beginning, Gunnison County, Colorado.



Legend

- County Roads
- State Highways
- Cities and Towns
- Crested Butte Fire Protection District
- County Boundary

Crested Butte Fire Protection District

THIS MAP WAS PREPARED BY GUNNISON COUNTY AND REPRESENTS GENERALIZED INFORMATION DATA FOR GENERAL PLANNING PURPOSES ONLY. THE DATA CONTAINED HEREON MAY BE SUBJECT TO CHANGE WITHOUT NOTICE. THE PRECISION, ACCURACY, AND COMPLETENESS OF THE INFORMATION IS NOT GUARANTEED. THE USER ASSUMES ALL LIABILITY FOR ANY DAMAGE OR LOSS OF DATA OR INFORMATION THAT MAY BE CAUSED BY THE USE OF THIS MAP.



Map Produced by Gunnison County GIS
 200 East Virginia Avenue
 Gunnison, Colorado 81230
 970.641.7673
 September 25, 2012

File: N:\County Departments\Fire Protection\Crested Butte District\Crested Butte Fire Protection District Overview Map.mxd